

BUILDING NO. 3
BUILDING NAME: HOTEL DEL PRADO (Formerly Cooper-Carlton Hotel)
LOCATION: 5307 South Hyde Park Boulevard CITY: Chicago
COUNTY: Cook STATE: Illinois ZIP: _____
OWNER: John Baird (Baird & Warner, Inc.)
ADDRESS: 200 West Madison, CITY: Chicago,
STATE: Illinois ZIP: _____
LOCATION OF LEGAL DESCRIPTION: County Recorder of Deeds
118 N. Clark Street, Chicago, IL
VERBAL BOUNDARY DESCRIPTION: Located on the southeast corner of South Hyde Park Boulevard and East 53rd Street, the boundary follows a line ten (10) feet from the building wall.
APPROXIMATE ACREAGE: 0.52 DATE OF CONSTRUCTION: 1918
ARCHITECT AND/OR BUILDER Sherman T. Cooper, Builder

DESCRIPTION:

Built one year later than the Hampton House, the "H" shaped Del Prado mirrors many of the neoclassical and terra cotta trimmed features of its near neighbor. With 150' frontage on East 53rd Street and 175 feet on South Hyde Park Boulevard, the red brick and terra cotta based building rises ten stories above its park-like setting. The arcaded terra cotta base contains a series of large Palladian windows and arched doorways on the East 53rd Street side, two of which have been filled in with glass block. New metal double hung windows have been installed in series of three on both facades. Vertical terra cotta trim frames the outlines the outside bays on both the 53rd Street and South Hyde Park Boulevard sides; the vertical trim terminates in finely sculpted Indian heads with feathered headdresses just below the cornice lines with their dentils. The terra cotta parapet is inset with brick panels to contribute added vertical emphasis at this level.

There are several commercial spaces in the two story terra cotta base on the west side of the building. One of the largest of the Hyde Park Apartment Hotels, the Del Prado contains 198 apartments.

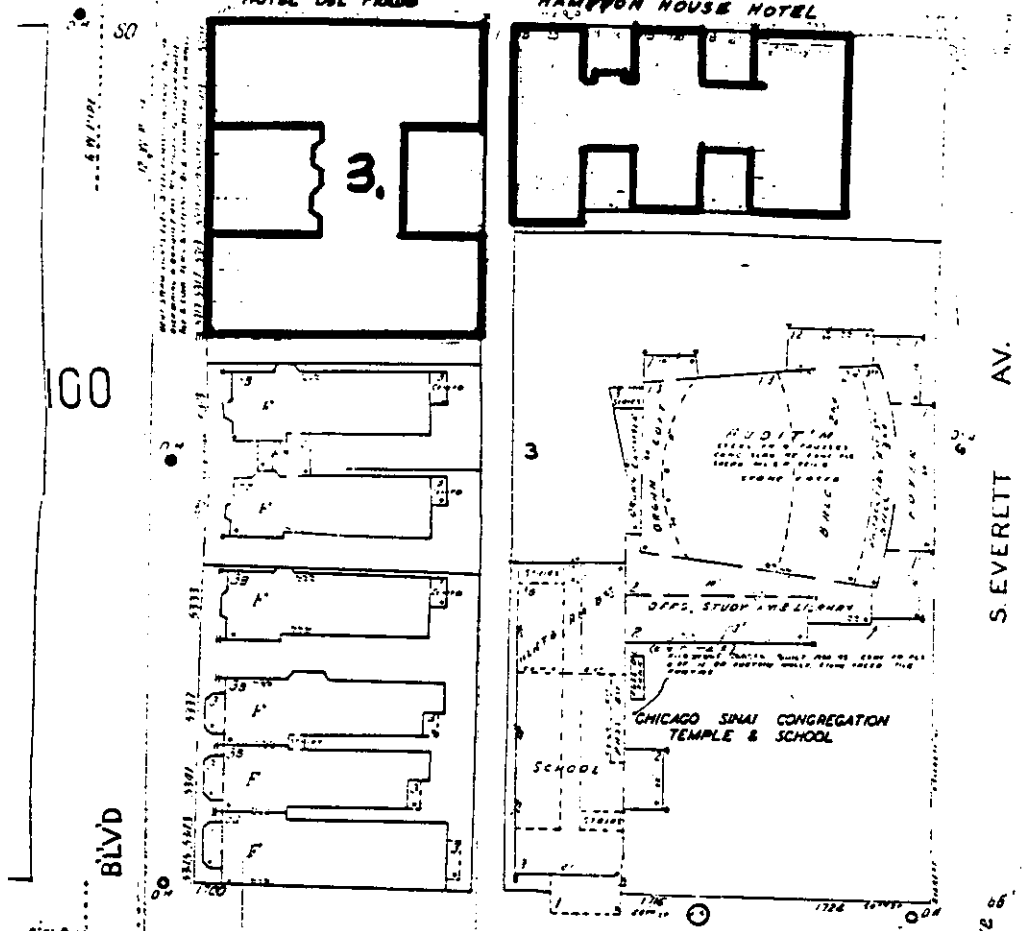
SIGNIFICANCE:

The Del Prado, which is one of the earliest and largest of the Hyde Park Apartment Hotels, derives its significance from the blending of its neoclassical features with historical design precedents indigenous to the locale - the American Indian. The finely sculpted Indian heads with feathered headdresses that cap the vertical terra cotta trim on the building represent some of the finest examples of the Chicago terra cotta makers' art. This is the only one of the apartment hotels in this thematic grouping that incorporates human terra cotta shapes in its ornamentation.

E. 53RD ST.

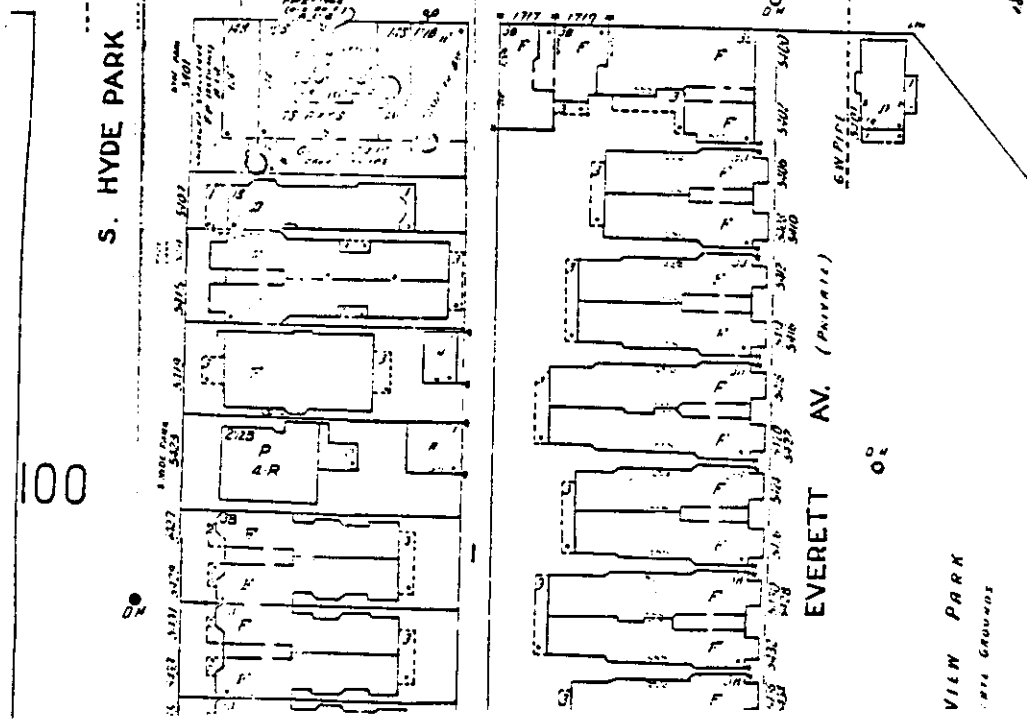
HOTEL DEL PRADO

HAMPYON HOUSE HOTEL



E. 54TH ST.

S. HYDE PARK BLVD



S. EVERETT AV.

VIEW PARK
CITY GROUNDS



IN REPLY REFER TO:

United States Department of the Interior

NATIONAL PARK SERVICE
P.O. BOX 37127
WASHINGTON, D.C. 20013-7127

RECEIVED

JUN 6 1986

HISTORIC PRESERVATION

MAY 23 1986

The Director of the National Park Service is pleased to inform you that the following properties have been entered in the National Register of Historic Places beginning May 11, 1986 and ending May 17, 1986. For further information call (202) 343-9552.

STATE, County, Vicinity, Property, Address, (Date Listed)

ALABAMA, Calhoun County, Jacksonville, Downtown Jacksonville Historic District, Roughly bounded by College, Thomas, Coffee, and Spring Sts. (05/13/86)

ALABAMA, Limestone County, Athens, Houston, Governor George Smith, House, 101 N. Houston St. (05/15/86)

ALABAMA, Mobile County, Mobile, Paterson House, 1673 Government St. (05/15/86)

ALABAMA, Tuscaloosa County, Tuscaloosa, Downtown Tuscaloosa Historic District, Roughly bounded by Fourth St., Twenty-second Ave., Seventh St., and Twenty-fifth Ave. (05/15/86)

ARIZONA, Coconino County, Grand Canyon vicinity, Trans-Canyon Telephone Line, Grand Canyon National Park, Grand Canyon along Bright Angel and North Kaibab Trails from South Rim to Roaring Springs and South Kaibab Trail to Tipoff (05/13/86)

HAWAII, Hawaii County, Bobeat Trail Habitation Cave (50-10-30-5004) (05/15/86)

ILLINOIS, Cook County, Barrington, Barrington Historic District, Roughly bounded by Dundee, W. Coolidge, E. Hillside, and S. Grove Aves., and S. Hough, E. Lake, Main, N. Garfield, and E. Applebee Sts. (also in Lake County) (05/16/86)

ILLINOIS, Cook County, Chicago, Chicago Beach Hotel (Hyde Park Apartment Hotels TR), 5100-5110 S. Cornell Ave. (05/14/86)

ILLINOIS, Cook County, Chicago, East Park Towers (Hyde Park Apartment Hotels TR), 5236-5252 S. Hyde Park Blvd. (05/14/86)

ILLINOIS, Cook County, Chicago, Flamingo-On-The-Lake Apartments (Hyde Park Apartment Hotels TR), 5500-5520 S. Shore Dr. (05/14/86)

ILLINOIS, Cook County, Chicago, Hotel Del Prado (Hyde Park Apartment Hotels TR), 5307 S. Hyde Park Blvd. (05/14/86)

ILLINOIS, Cook County, Chicago, Hyde Park-Kenwood Historic District (Boundary Increase), 825-833 E. Fifty-second St. (05/16/86)

ILLINOIS, Cook County, Chicago, Lakeview Historic District (Boundary Increase), 701, 705, 711, 715-717, 721, 733-735, 737, and 739 Belmont, 3162 & 3164 Orchard and 3171 Halsted (05/16/86)

ILLINOIS, Cook County, Chicago, Mayfair Apartments (Hyde Park Apartment Hotels TR), 1650-1666 E. Fifty-sixth St. (05/14/86)

ILLINOIS, Cook County, Chicago, Poinsetta Apartments (Hyde Park Apartment Hotels TR), 5528 S. Hyde Park Blvd. (05/14/86)

ILLINOIS, Cook County, Chicago, Shoreland Hotel (Hyde Park Apartment Hotels TR), 5450-5484 S. Shore Dr. (05/14/86)

ILLINOIS, Vermilion County, Danville, Stone Arch Bridge, 760-800 E. Main St. (05/16/86)

KENTUCKY, Campbell County, Fort Thomas, Fort Thomas Military Reservation District, Roughly bounded by Pearson, Alexander, and Cochran Aves., River Rd., and S. Fort Thomas Ave. (05/15/86)